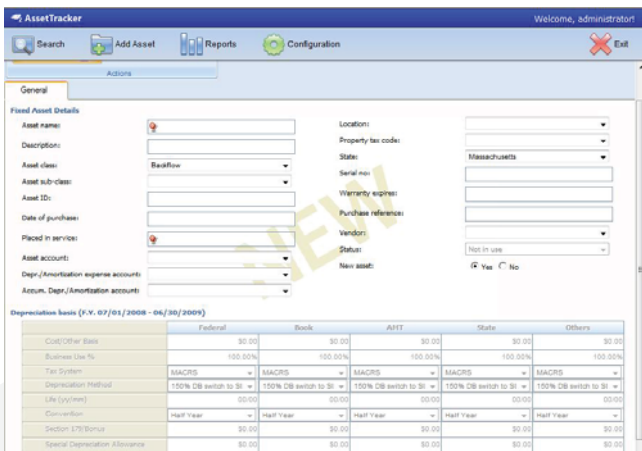




With GASB 34 now in place, accounting has taken a step to a new level. Bonsai Logic's AssetTracker will bring you to that same level, with detailed databases, various depreciation algorithms, and web-based software that goes where you do. Step into another realm of managing departmental assets with the click of a finger.



Adding new assets is a snap. All of your existing assets can be automatically added when AssetTracker is first introduced, provided you have them in existing digital media.

Do your departments suffer from any of the following?

- Inefficient or non-existent software to maintain assets.
- Inability to check your annual depreciation at the click of a button.
- Endless paper-driven, error-prone system.
- Departments that are unable or unwilling to furnish accounting summaries?



Why Use AssetTracker™?

- ✓ Create an interactive, online database that accounts for ALL assets and their history.
- ✓ Various depreciation algorithms that do the work for you.
- ✓ Sophisticated reporting system that puts YOU in control with the ability to "create your own report."

About Bonsai Logic



Bonsai Logic was founded in 2000 to serve the custom needs of the private and public sector. With over \$1.2 million dollars in sales, we are the experienced, yet local, company to provide you with the tools and vision you need to safely upgrade your infrastructure.

Our private sector roots provide us with an endless drive to improve efficiency, as well as to remain constantly introspective in the interests of product perfection and 100% client satisfaction.

Our speed of growth is trumped only by our dedication to customer service...when your client's best interests are the #1 priority, everyone wins.

Come find out for yourself, and welcome to Bonsai Logic...you'll love it here.

ID	Name	Type	Status	Date In Service	Original Cost
	T-PLEASANT LAKE	Tanks	In use	05/01/2005	\$2,400,000.00
	Treatment Station #1	Buildings	In use	04/10/1998	\$2,000,000.00
	Route 39 Tank	Tanks	In use	01/01/2001	\$762,500.00
1733	P-572	Pipes	In use	01/01/1990	\$251,305.80
1799	P-2330	Pipes	In use	01/01/1997	\$246,254.85
1452	P-2539	Pipes	In use	01/01/1985	\$225,531.41
654	P-505	Pipes	In use	01/01/1987	\$202,823.93
1397	P-1177	Pipes	In use	01/01/1998	\$193,363.81
1293	P-761	Pipes	In use	01/01/1978	\$179,821.80
500	P-808	Pipes	In use	01/01/1994	\$179,670.44
583	P-1766	Pipes	In use	01/01/1990	\$162,315.25
143	P-567	Pipes	In use	01/01/1998	\$149,167.06
1774	P-494	Pipes	In use	01/01/1998	\$149,022.70
139	P-137	Pipes	In use	01/01/1998	\$143,461.01
365	P-546	Pipes	In use	01/01/1990	\$131,693.55
1450	P-1753	Pipes	In use	01/01/1985	\$120,332.74
1052	P-1172	Pipes	In use	01/01/1990	\$115,785.27
1406	P-1167	Pipes	In use	01/01/1997	\$111,831.68
1773	P-2421	Pipes	In use	01/01/1998	\$111,081.34
399	P-2346	Pipes	In use	01/01/1995	\$110,829.24
773	P-2583	Pipes	In use	01/01/1999	\$109,203.78
655	P-504	Pipes	In use	01/01/1987	\$107,946.70
1732	P-1310	Pipes	In use	01/01/1997	\$106,625.24
364	P-539	Pipes	In use	01/01/1990	\$106,405.38
1795	P-815	Pipes	In use	01/01/1994	\$103,267.72
1419	P-1116	Pipes	In use	01/01/1987	\$95,230.46

Powerful and easy to use reports allow you to filter by asset value, date in service, and many other options